

VMOD Service Pack 1

Changes introduced in Service Pack 1

- Direct access to Windows XP¹ from the main menu
- Improved overall system stability
- Improved function of user interface
- Improved remote responsiveness and functionality
- Enlarged icons for the video games
- Improved web browser functionality
- New video driver
- Enhanced Wi-Fi support, including a signal strength indicator
- The Play/Pause button on the remote now functions as a “Stop” button when held down, but will continue to function as the Play/Pause button when only momentarily pushed.
- The automatic remote pairing screen now shows more information on how to pair the remote, and also displays the progress of the pairing.
- Bluetooth Pairing now supports pairing with most Bluetooth-enabled devices, with or without PIN. Specific services (features) can be enabled, if supported by both the device and the VMOD.² Additional VMOD Remotes will continue to pair automatically when selected.

Requirements

This installation will require a USB Thumb Drive with a capacity of at least 64 megabytes. Such a device is readily available at many retailers for under USD\$10, and the capacity will generally be over 2 gigabytes, or 2,000 megabytes, in that price range.

The device used must support the USB Mass Storage Device class, and it is strongly recommended to use a device supporting High-Speed USB 2.0 connections (Most, if not all, devices currently on the market support this). It is not necessary to purchase a new thumbdrive for this purpose if you already have purchased one previously.

An Internet connection is required to download the service pack from <http://www.myvmod.com>.

¹ Installing software in Windows XP on VMOD carries the same risk as installing it on any other Windows XP system. If installing 3rd party software, virus protection is strongly recommended. The VMOD Limited Warranty does not cover damage or loss of functionality caused by 3rd party software.

² Support of Bluetooth protocols and profiles is limited to those supported by the Microsoft Windows XP SP2 Bluetooth Stack. This stack includes support for keyboards, mice, and input devices, and a limited selection of other services. Audio is not supported over Bluetooth. Not all features of Bluetooth devices, including those which are compatible with the Bluetooth Stack, are directly supported by VMOD's user interface, and may require additional software which is neither supported by nor supplied by Vizualogic.

Improving Legibility of Screen Fonts

(Optional Procedure)

If you have difficulty viewing the text on the monitor, complete these steps to enlarge the size of the fonts. This procedure is not necessary for installation but will improve your experience in Windows XP.

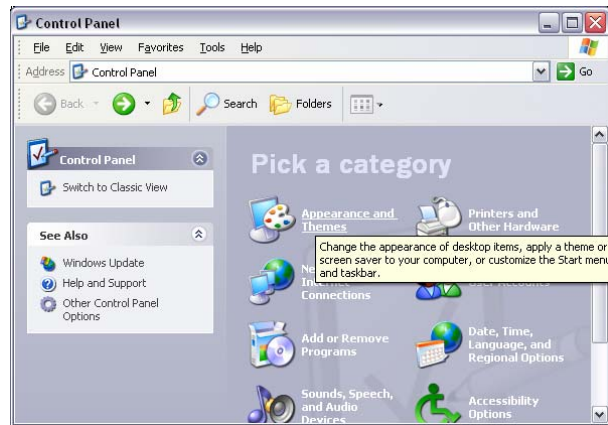
If the Service Pack has not yet been installed, press the Power button to enter the “Powering Off” screen. Select “Close Program”. This will enter Microsoft Windows. If the Service Pack has already been installed, select “Windows XP” from the VMOD Main Menu, then “OK” to enter Windows XP.



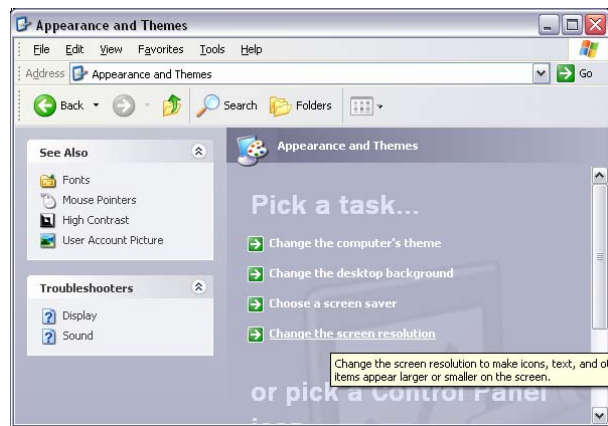
In Microsoft Windows, the remote control will function as a computer mouse. This is similar to the behaviour of the Web Browser module. Select the “Start” menu in the lower-left corner of the screen, and press Enter.



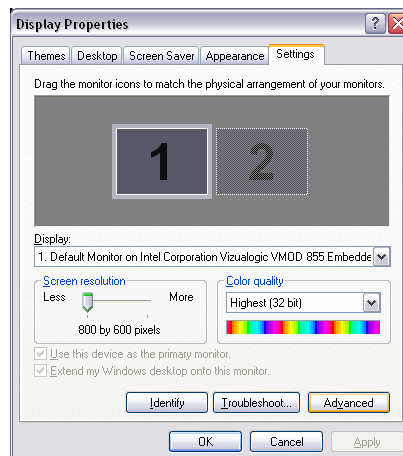
Select “Control Panel” and press Enter.



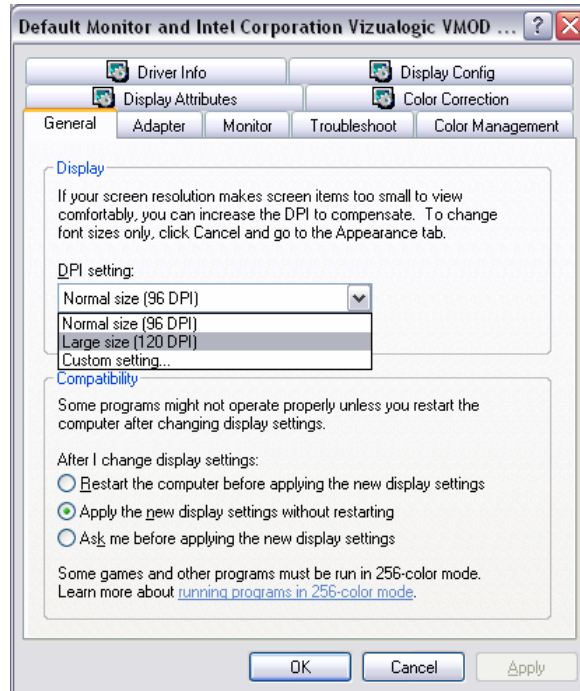
Under “Pick a category” in the Control Panel, select “Appearance and Themes”.



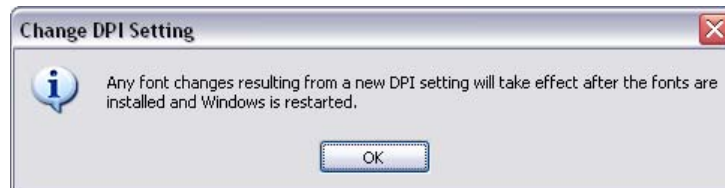
Select “Change the screen resolution” in the “Appearance and Themes” window.



In the lower-right hand corner of this window, click the button marked “Adyanced”



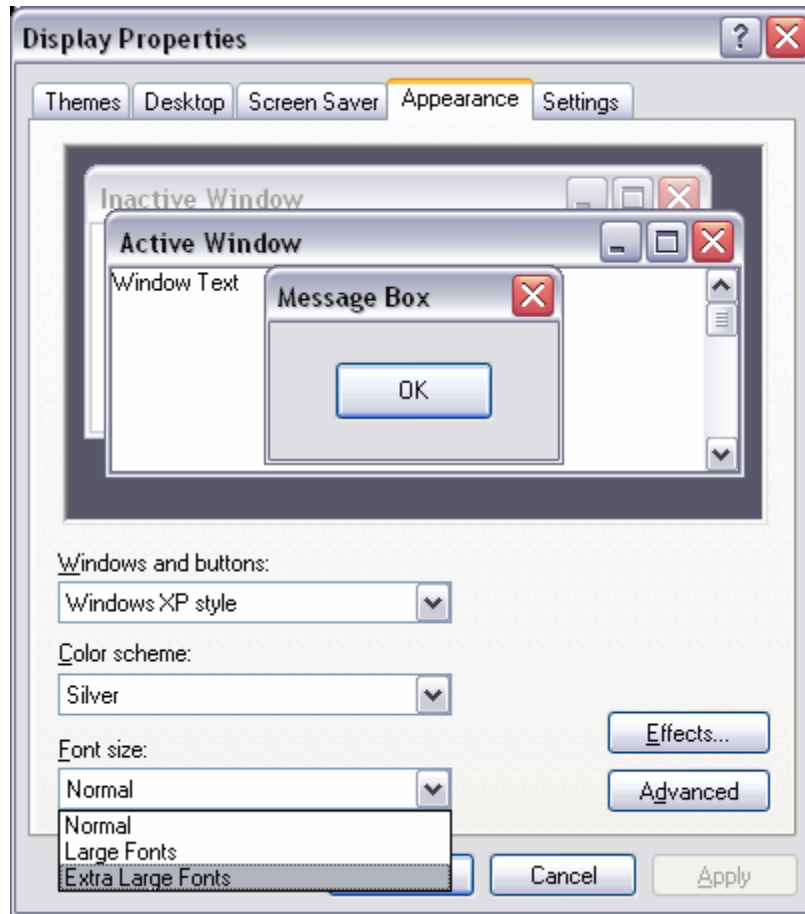
In the “General” Tab, in the grouping “Display”, change the setting for “DPI Setting” to “Large Size (120 DPI)”. This will enlarge the fonts by 25%. There is also a setting to allow a custom font enlargement up to 200%. Larger sizes will improve legibility at the cost of available space on the screen.



A warning will appear that “Any font changes resulting from a new DPI setting will take effect after the fonts are installed and Windows is restarted”. Press “OK” to dismiss this dialog, then press “OK” to dismiss the “Advanced” dialog.



A lengthy dialog window will appear advising you that the files are already loaded to support this. Press “Yes” on this dialog to dismiss it.



When you have returned to the “Display Properties” dialog, select the “Appearance” tab. Under “Font Size”, select “Extra Large Fonts”.



Press “Apply”. You will be prompted to restart the VMOD, select “Yes”.

After the reboot, the enlarged fonts will have taken effect to improve the legibility on smaller monitors. You may repeat this procedure to change the settings at any time desired.

Update Procedure

If the VMOD user interface is running, push the "Power" button. This will bring up the shutdown options.



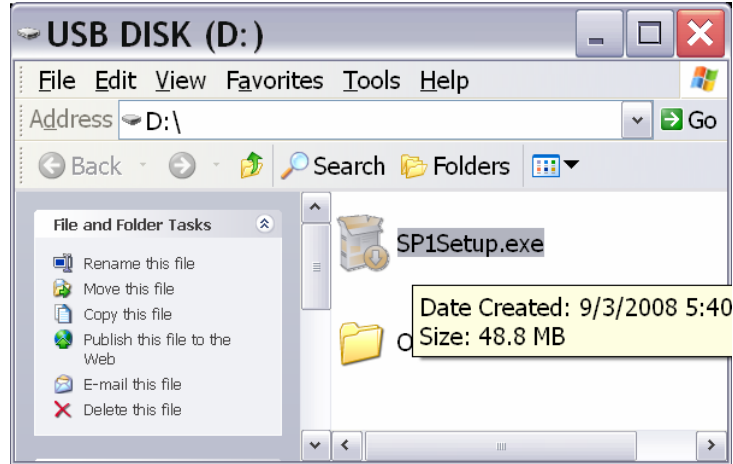
Select "Close Program" from the menu and press "Enter". The system will exit to Microsoft Windows XP, and the VMOD Remote will function as a computer mouse.

Close all open programs before starting installation.

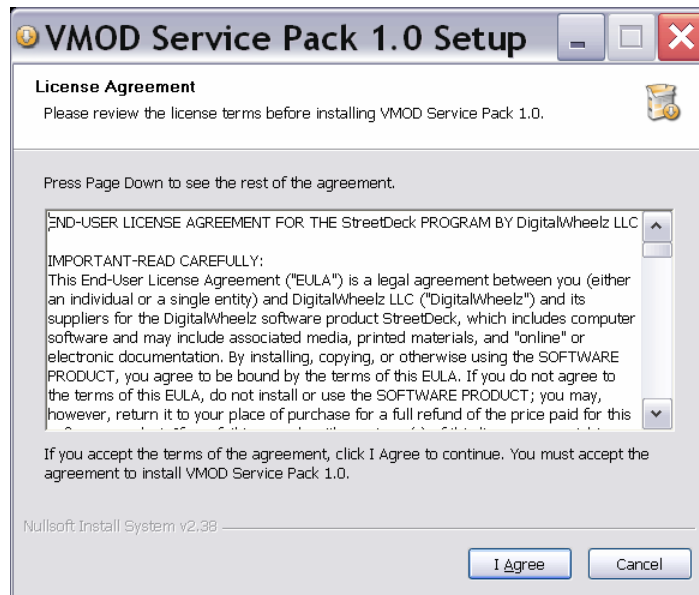
Insert the thumbdrive containing "SP1Setup.exe". We recommend having this as the only file for the purpose of simplifying locating the file while using the VMOD; however there is no technical problem with other files being present.



On the dialog that appears, select "Open folder to view files using Windows Explorer". If several types of media are loaded, this may require scrolling down.



Double-click "SP1Setup.exe". This is done by pushing the "ENT" button on the remote twice in short succession while the cursor is over the file.



The license agreement will appear. This is also included at the end of this document, for review if there is difficulty reading it on the monitor attached to the VMOD.

Select "I Agree" to proceed with installation.

The system will install the service pack. Please do not shut down the VMOD during this process. Several black screens will appear and during a brief time the remote will not function as its driver is updated. This is normal.



At the end of the installation, you may be prompted to uninstall the "Intel(R) Graphics Media Accelerator Driver". Select "Yes".
When prompted to reboot, select "Yes".



The system will reboot. VMOD will start up and the display will appear cropped due to the use of the Microsoft default video driver. StreetDeck will not start during this reboot phase, but the remote will function as a computer mouse again in Windows.

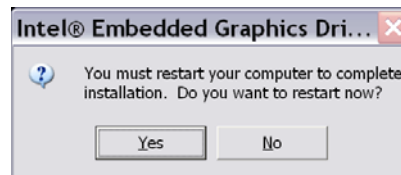


When the "Found New Hardware Wizard" appears, click "Cancel". It will appear twice, press "Cancel" on the second dialog as well.

You will be prompted with the "Hardware Installation" dialog warning that the "Intel Corporation Vizualogic VMOD 855 Embedded Graphics Controller" has not passed Windows Logo testing.



This does not indicate a malfunction; only that the driver was not specifically approved by Microsoft. Select "Continue Anyway". This dialog will appear twice as well, and "Continue Anyway" should be used for the second dialog. NOTE: During this process, the video will be momentarily disconnected and your monitor will indicate "No Signal" or "EXT AUX", or something similar. This is normal.



When prompted to reboot, click "Yes".

When the system reboots, the VMOD will have Service Pack 1 installed. Up and down arrows will appear on the right side of the main screen.

Operational Changes

The method for display recovery has changed. The previous driver used Control-Alt-F1 and Control-Alt-F2 on an attached keyboard to recover the video output. The current system now recovers video by holding the fast forward and rewind keys on the remote control for five seconds.

Known Issues

After the first startup in Service Pack 1, when exiting from the Games, the screen will appear stretched and the user interface will scroll slightly off-screen. This issue is not known to repeat following a successful reboot after encountering this. To temporarily restore the display without rebooting, go to the VMOD Main Menu, select "Windows XP", and when in Windows XP, use the display recovery method documented above to restore the video output to its defaults.

License Agreement

END-USER LICENSE AGREEMENT FOR THE StreetDeck PROGRAM BY DigitalWheelz LLC

IMPORTANT-READ CAREFULLY:

This End-User License Agreement ("EULA") is a legal agreement between you (either an individual or a single entity) and DigitalWheelz LLC ("DigitalWheelz") and its suppliers for the DigitalWheelz software product StreetDeck, which includes computer software and may include associated media, printed materials, and "online" or electronic documentation. By installing, copying, or otherwise using the SOFTWARE PRODUCT, you agree to be bound by the terms of this EULA. If you do not agree to the terms of this EULA, do not install or use the SOFTWARE PRODUCT; you may, however, return it to your place of purchase for a full refund of the price paid for this software product. If you fail to comply with any term(s) of this license, your rights under this license will terminate immediately without notice.

WARNING:

The software should only be used when traffic and environment conditions permit. It is dangerous to use the software's controls or enter data while operating a vehicle. The vehicle should be parked when entering data or using the software's controls. It is the responsibility of the driver to ensure that the system is operated safely and in compliance with local traffic laws. DigitalWheelz shall have no responsibility what-so-ever for any consequences that may result from use of this software that does not comply with this warning.

SOFTWARE PRODUCT LICENSE:

The SOFTWARE PRODUCT is protected by copyright laws and international copyright treaties, as well as other intellectual property laws and treaties. The SOFTWARE PRODUCT is licensed, not sold.

1. GRANT OF LICENSE

This EULA grants you the following rights: Application Software. You may use the online version of the SOFTWARE PRODUCT. You may save it locally on one computer if desired, for the purpose of eliminating the need to connect to the DigitalWheelz web site. You may not redistribute the free on-line version of this software. However, you may provide links to the on-line version without restriction. Additional rights may be granted upon request.

Evaluation Software License: User of Evaluation or Demo Software are bound by the terms in this agreement. DigitalWheelz does not warrant or support unlicensed software.

2. DESCRIPTION OF OTHER RIGHTS AND LIMITATIONS

Limitations on Reverse Engineering, Decompilation, and Disassembly. You may not reverse engineer, decompile, or disassemble the SOFTWARE PRODUCT, except and only to the extent that such activity is expressly permitted by applicable law notwithstanding this limitation.

Separation of Components. The SOFTWARE PRODUCT is licensed as a single product. Its component parts may not be separated for use on more than one computer.

Rental. You may not rent, lease, or lend the SOFTWARE PRODUCT.

Support Services: DigitalWheelz may or may not provide you with support services related to the SOFTWARE PRODUCT ("Support Services"). Any supplemental software code provided to you as part of the Support shall be considered part of the SOFTWARE PRODUCT and subject to the terms and conditions of this EULA. With respect to technical information you provide as part of the Support Services, DigitalWheelz may use such information for its business purposes, including for product support and development.

Software Transfer: No rights. The recipient agrees to the terms of this EULA. If the SOFTWARE PRODUCT is an upgrade, any transfer must include all prior versions of the SOFTWARE PRODUCT.

Termination: Without prejudice to any other rights, DigitalWheelz may terminate this EULA if you fail to comply with the terms and conditions of this EULA. In such event, you must destroy all copies of the SOFTWARE PRODUCT and all of its component parts.

3. UPGRADES

If the SOFTWARE PRODUCT is an upgrade or a revision of a component of a package of software programs that you licensed as a single product, the SOFTWARE PRODUCT may be used and transferred only as part of that single product package and may not be separated for use on more than one computer.

4. COPYRIGHT

All title and copyrights in and to the SOFTWARE PRODUCT (including but not limited to any images, photographs, animations, video, audio, music, text, objects, .dll's, plug-ins, skins, and other components incorporated into the SOFTWARE PRODUCT), the accompanying printed materials, and any copies of the SOFTWARE PRODUCT are owned by DigitalWheelz or its suppliers unless otherwise stated in the accompanying documentation. The SOFTWARE PRODUCT is protected by copyright laws and international treaty provisions. Therefore, you must treat the SOFTWARE PRODUCT like any other copyrighted

material except that you may install the SOFTWARE PRODUCT on a single computer provided you keep the original solely for backup or archival purposes. You may not copy the printed materials accompanying the SOFTWARE PRODUCT.

5. DUAL-MEDIA SOFTWARE

You may receive the SOFTWARE PRODUCT in more than one medium. Regardless of the type or size of medium you receive, you may use only one medium that is appropriate for your single computer. You may not use or install the other medium on another computer. You may not loan, rent, lease, or otherwise transfer the other medium to another user, except as part of the permanent transfer (as provided above) of the SOFTWARE PRODUCT.

6. MISCELLANEOUS

If you acquired this product in the United States, this EULA is governed by the laws of the State of Delaware. If this product was acquired outside the United States, then local law may apply.

7. EXPORT RESTRICTIONS

Licensesee agrees that it will not export or re-export the SOFTWARE PRODUCT to any country, person, entity, or end user subject to US export restrictions. Restricted countries currently includes, but may not be limited to: Cuba, Iran, Iraq, Libya, North Korea, and Syria.

8. SUPPORT

DigitalWheelz has no obligation to provide technical support for the Software. DigitalWheelz may at any time terminate any support services and/or any other related services related to this EULA and the Software anytime without prior notice including, but not limited to the Software becoming inoperable or incompatible with current operating systems, hardware, or other technologies.

9. WARRANTY DISCLAIMER

THIS SOFTWARE PRODUCT IS SOLD "AS IS". ANY USE OF THE SOFTWARE PRODUCT IS AT LICENSEE'S OWN RISK. TO THE MAXIMUM EXTENT PERMITTED BY APPLICABLE LAW, DigitalWheelz LLC AND ITS SUPPLIERS DISCLAIM ALL WARRANTIES AND CONDITIONS, EITHER EXPRESS OR IMPLIED, INCLUDING, BUT NOT LIMITED TO, IMPLIED WARRANTIES OF MERCHANTABILITY, FITNESS FOR A PARTICULAR PURPOSE, TITLE, AND NON-INFRINGEMENT, WITH REGARD TO THE SOFTWARE PRODUCT, AND THE PROVISION OF OR FAILURE TO PROVIDE SUPPORT SERVICES. THIS LIMITED WARRANTY GIVES YOU SPECIFIC LEGAL RIGHTS. TO THE EXTENT THAT THE APPLICABLE STATE

/ JURISDICTION HAS RESTRICTIONS ON WARRANTY EXCLUSION, THE ABOVE EXCLUSION MAY NOT APPLY TO YOU.

10. LIMITATION OF LIABILITY

TO THE MAXIMUM EXTENT PERMITTED BY APPLICABLE LAW, IN NO EVENT SHALL DIGITALWHEELZ OR ITS SUPPLIERS BE LIABLE FOR ANY SPECIAL, INCIDENTAL, INDIRECT, OR CONSEQUENTIAL DAMAGES WHATSOEVER (INCLUDING, WITHOUT LIMITATION, DAMAGES FOR LOSS OF BUSINESS PROFITS, BUSINESS INTERRUPTION, LOSS OF BUSINESS INFORMATION, OR ANY OTHER PECUNIARY LOSS) ARISING OUT OF THE USE OF OR INABILITY TO USE THE SOFTWARE PRODUCT OR THE PROVISION OF OR FAILURE TO PROVIDE SUPPORT SERVICES, EVEN IF DIGITALWHEELZ HAS BEEN ADVISED OF THE POSSIBILITY OF SUCH DAMAGES. IF THIS SOFTWARE IS INSTALLED IN A VEHICLE, IT IS THE RESPONSIBILITY OF THE END USER TO ENSURE THAT IT IS USED IN A SAFE MANNER AND IN COMPLIANCE WITH WITH LOCAL TRAFFIC LAWS. IN ANY CASE, DIGITALWHEELZ'S ENTIRE LIABILITY UNDER ANY PROVISION OF THIS EULA SHALL BE LIMITED TO THE GREATER OF THE AMOUNT ACTUALLY PAID BY YOU FOR THE SOFTWARE PRODUCT OR U.S.\$5.00. BECAUSE SOME STATES AND JURISDICTIONS DO NOT ALLOW THE EXCLUSION OR LIMITATION OF LIABILITY, THE ABOVE LIMITATION MAY NOT APPLY TO YOU.